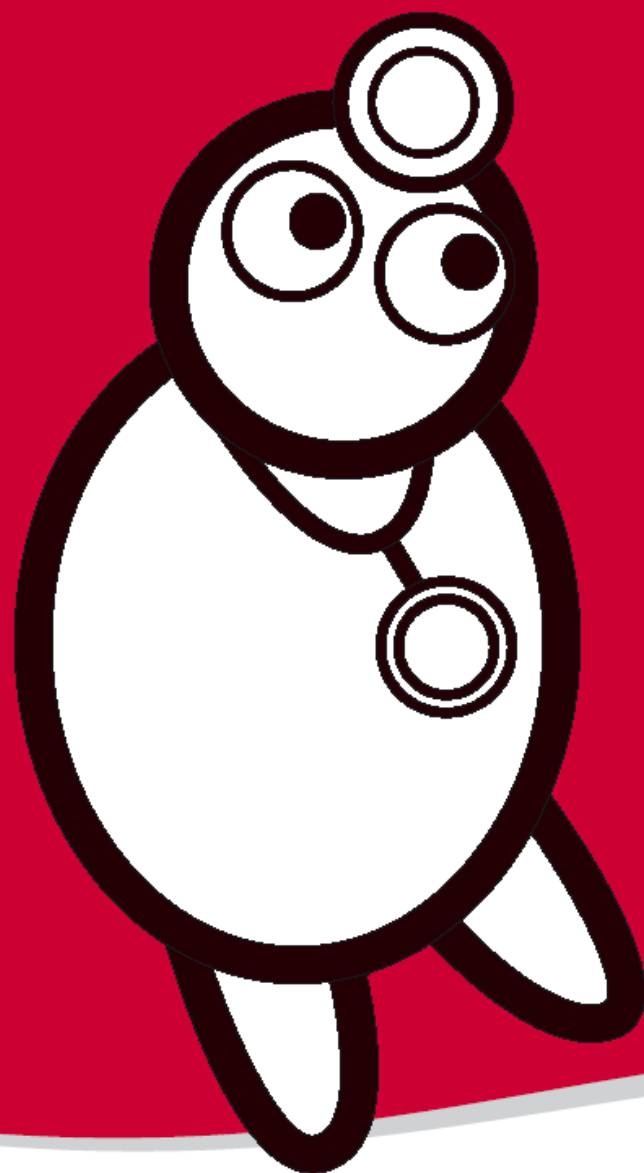


# DocCheck<sup>®</sup>

## Technical manual

Version 11.0 - Updated 1.3.2008





## Content

### 1 DocCheck® Password Protection

- 1.1 Application for DocCheck® Password Protection
- 1.2 Functionality of DocCheck® Password Protection
- 1.3 Guidelines for installation of DocCheck® Password Protection
- 1.4 Additional safety concepts
- 1.5 DocCheck® as web service
- 1.6 Selection of permitted professional groups
- 1.7 Special feature: access for employees of your own pharmaceutical company only
- 1.8 Company passwords
- 1.9 Test passwords
- 1.10 DocCheck Parameter
- 1.11 Other special features

### 2 DocCheck® Routing

- 2.1 Routing of professional groups
- 2.2 Country or language routing
- 2.3 Routing of specialties
- 2.4 Transfer of an anonymous ID (unique key) for each user

### 3 DocCheck® Personal

- 3.1 DocCheck® Personal standard
- 3.2 DocCheck® Personal “fresh”
- 3.3 DocCheck Personal Pool
- 3.4 Personal with company and test passwords
- 3.5 Special functions for Personal

### 4 DocCheck® Alias

### 5 DocCheck® Groups

### 6 DocCheck® CreaM (formerly known as Webmaster Lounge)

- 6.1 Administration
- 6.2 Statistics
- 6.3 Benchmarking

### 7 DocCheck® Pool

### 8 Contact



## Medical Services

### 1 DocCheck® Password Protection

Do you wish to install DocCheck Password Protection on your website or are you interested in one of our special features like DocCheck Routing or DocCheck Personal? If so, keep on reading: this manual provides you with information about the various opportunities DocCheck Password Protection offers. You can find out about necessary requirements on your side, how the Password Protection is installed and what costs might occur potentially.

#### 1.1 Application for DocCheck® Password Protection

This is the best and easiest way to get Password Protection for your company's website: apply for DocCheck Password Protection on our website <http://www2.doccheck.com/com/company/index.php> at any time. Immediately after application, you receive two e-mails containing the HTML code for the login and a username/password combination providing access to the DocCheck Cream (formerly known as Webmaster Lounge). From then on you can administer DocCheck Password Protection completely online, for example you can edit websites or company passwords quickly and easily online in DocCheck Cream (formerly known as Webmaster Lounge) (see also 6.1).

#### 1.2 Functionality of DocCheck® Password Protection

The HTML code for your website that is provided by DocCheck contains an entry form with fields to enter username and password.

DocCheck®  
Free Entrance for Healthcare Professionals

Username

Password

[Password forgotten?](#) [Apply for a password](#)

Design variations are available at  
[http://www2.doccheck.com/redirect/htmlcode\\_com/](http://www2.doccheck.com/redirect/htmlcode_com/)



## Medical Services

Once a visitor to your website enters his/her username and DocCheck password, a script on the DocCheck server (<http://www.doccheck.com>) is executed. The script checks whether the user has a valid password and whether he/she belongs to one of the permitted professional groups (physicians, pharmacists etc., see 1.6). If both requirements are fulfilled the script sends the user back (by HTTP redirect) to the protected area of your website.

### Specialties:

- Data transfer can also be encrypted (SSL protocol).
- Users can be redirected to a static HTML page or to a script on your server.

Please note: with standard password protection the closed area is only protected by the URL being unknown. Additional safety concepts can be found in chapter 1.4.

### 1.3 Guidelines for Installation of DocCheck® Password Protection

We kindly ask you to follow the guidelines below when installing DocCheck Password Protection:

1. DocCheck provides the website operator with one (or more) logins. A login consists of an HTML code snippet.
2. The code, specifically the IFRAME tag, may not be modified in a way that
  - \* limits or changes the functionality of the login form or the login
  - \* limits or prevents the display of the login form
  - \* modifies the SRC attribute
  - \* modifies or removes the alternative link
  - \* causes the login form not to be loaded directly from the DocCheck server

If you require a modification of the provided login form templates (e.g. to better adapt to your website layout), please contact us.

3. Any tracking, storage or other use of username/password combinations by the information provider constitutes an infringement of data protection and is strictly prohibited. From the HTML code of the login username and password are sent to a script at DocCheck solely.
4. The login form must be placed in a publicly accessible area of the respective website (e.g. in the medical information area) so that users are able to see immediately that access is possible via DocCheck.



## Medical Services

The URL used in the SRC attribute of the IFRAME tag and in the alternative Link is structured like this:

```
http://login.doccheck.com/code/12345/com/xl_red/
```

where “12345” is to be replaced with the respective login ID (“key number”), the 2- to 4-letter code denotes the ISO code of the language (“de”, “com”, “fr”) [note we use “com” instead of “en” and sometimes country-specific versions such as “befr” for “Belgium French”] and the free text parameter denotes the template name.

A list of the available standard templates can be found here:

```
http://www2.doccheck.com/redirect/htmlcode_com/
```

By default, the login target will be the top frame of your site. If you need to change this to the current frame, you need only append the parameter “\_parent”:

```
http://login.doccheck.com/code/12345/com/xl_red/_parent/
```

If additional parameters are to be passed (see DocCheck/Parameter), they can be appended to the URL:

```
http://login.doccheck.com/code/12345/com/xl_red/session_id=abcde/ok=1
```

Important: Access to your protected area may not depend on

1. the referring URL login.doccheck.com (for referer checks)
2. the IP addresses of the DocCheck servers
3. the passing of undocumented parameters (such as “dc=1”)

I.e. your site must not rely on any of these to be present or fixed.

### 1.4 Additional Safety Concepts

In addition to standard DocCheck Password Protection, your server can be provided with extra security precautions to prevent users from accessing your protected area by knowing its URL, by bookmarks etc.



## Medical Services

### *1.4.1 Setting a Session Variable*

The setting of a session variable requires a dynamic page setup on your server, e.g. ASP, ColdFusion, PHP.

Your website defines a session ID before the login (e.g. on the login page) and stores it in a cookie. After logging in, your website checks the cookie. If it is not set or the session has already expired, your site can deny access to the user. Disadvantage: users who do not accept cookies cannot enter the protected area of your site.

Costs: none, except for passing a session variable (see 1.4.2)

### *1.4.2 Passing a session ID through*

Alternatively to 1.4.1, your session ID can be passed through the DocCheck login (cf. DocCheck/Parameter). This works also for users with deactivated cookies. Direct access to your protected area via a bookmark or dissemination of the URL is only possible if the current session hasn't yet expired or if the user grabs a fresh session ID from your server and uses it to gain access.

The latter can be prevented by additional encryption, cf. 1.4.3.

The former can be prevented by binding the session ID to the user's IP address on your site. That way a disseminated link would not work even if the session ID contained in it is valid.

### *1.4.3 Additional encryption*

As an additional security measure, the session ID can be encrypted or checksummed during the login. This prevents users from entering your protected area simply by knowing a valid session ID.

#### **1.4.3.1 Checksum**

You will exchange a secret key with DocCheck by phone, e.g. "L337P455".

In addition to your session ID passed as parameter "sessionid", we compute a checksum via md5("L337P455" . sessionid) and pass it back as "sessionid\_enc".

Your website then computes the same checksum and rejects the user if they do not match.



## Medical Services

### 1.4.3.2 Symmetric Encryption

You will exchange a secret key with DocCheck by phone, e.g. „L337P455“. The session ID you pass as parameter „sessionid“ will be encrypted with an agreed-upon algorithm (e.g. Blowfish, AES/Rijndael, Twofish etc.) using this key. The encrypted (and hex-encoded) string will then be passed back as “sessionid\_enc” instead of the original session ID. Your website then decrypts the string and rejects the user if the decrypted string is not a valid session ID.

### 1.4.4 Additional security measures

On request, more complex challenge-response methods can be implemented if very high security standards need to be met. Don't hesitate to contact us for details.

### 1.4.5 Not recommended security measures

We strongly discourage referrer checks because they are highly browser-dependent.

We strongly discourage server-based authentication (.htaccess) since current browsers do no longer support bypassing it by calling the URL `http://login:password@www.webserver.xy`

## 1.5 DocCheck as web service

In certain scenarios where the aforementioned security measures are not sufficient or otherwise not applicable, the DocCheck login is also available as a web service. Please contact us for further information.

## 1.6 Selection of Permitted Professional Groups

As a webmaster you can restrict access to your website to certain professional groups. To keep your website user-friendly, we recommend the access to be as open as possible.

As a standard the professional groups of physicians, pharmacists, students and employees of the pharmaceutical industry are granted access to your website.



## Medical Services

In addition, the operator can choose from the following professional groups:

Veterinarian  
Dentist

Ambulance Operative  
Biochemist  
Biologist  
Dental Technician / Mechanic  
Ergotherapist  
Health Insurance Fund Employee  
Lawyer  
Management Consultant  
Medical Advertising Agency Employee  
Medical Documentalist  
Medical Journalist  
Medical Physicist

- Medical Technican
- Non-Medical Practitioner
- Old People's Nurse
- Other Medical Professions
- Pharmaceutical-Technical Assistant
- Pharmacy Engineer
- Psychological Technical Assistant
- Psychotherapist
- Student of Osteopathy

Assistant Dietician  
Biolog./ Chem. Technical Assistant  
Chemist  
Doctor's Receptionist / Assistant  
First Aid Assistant  
Insurance Company Employee  
Librarian  
Marketing and Sales  
Medical Dealer  
Medical Information Scientist  
Medical Laboratory Assistant  
Medical Publishing House Employee

- Midwife
- Nurse
- Ophthalmic Optician / Optometrist
- Pharmac.-Commercial Employee
- Pharmacy Assistant
- Physiotherapist
- Psychologist
- Speech Therapist
- Toxicologist



**DocCheck<sup>®</sup>**

## Medical Services

### **1.7 Special Feature: Access for Employees of your own Pharmaceutical Company only**

Usually you can only permit access to your website for whole professional groups, e.g. physicians, pharmacists, students or employees of the pharmaceutical industry. If you as a pharmaceutical company protect your website with DocCheck and exclude the professional group “employees of the pharmaceutical industry”, even your own employees can not access the website with their DocCheck passwords. We can inhibit this by admitting within the group “employees of the pharmaceutical industry” only employees of your company.

Technically we check the e-mail address or the company name of the user at his/her login. If the e-mail address belongs to your company, the user is admitted otherwise access is denied.

Please note that employees of other pharmaceutical companies that have applied for a DocCheck password as physician or pharmacist can still access your websites.

To admit a group of users individually and activate each user separately, please use the feature DocCheck Groups (section 5).

Do not hesitate to contact us for an individual offer.



## Medical Services

### 1.8 Company passwords

As the operator of a website you can set up an unlimited number of additional username/password combinations granting access to the protected area of your websites. These so-called company passwords are valid only for your company's websites and for example can be passed on to the field service. They can be passed on by the operator, on the operator's own discretion and responsibility, to a user group, which is in the operator's opinion authorised. You can easily create and edit company passwords in the DocCheck CReaM on your own (see 6.1).

### 1.9 Test passwords

You can add test passwords in the DocCheck CReaM to facilitate testing of functions such as Routing on your site. Test passwords work like company passwords (cf. 1.8) but can be assigned additional information such as profession or country to test the different routings.

### 1.10 DocCheck Parameter

Using this special feature, you can pass arbitrary parameters through the login. All you need to do is append them as "variable=value" pairs to the URL in the IFRAME and the alternative link:

<http://login.doccheck.com/.../test=1/onemoretest=abcde>

If the values should contain slashes (/), these must be escaped as hex code. All passed parameters are appended to the target URL as GET parameters. This is an automated process; you do not need to pre-register your parameters with DocCheck.

On request, parameters can be encrypted or checksummed, cf. 1.4.3



## Medical Services

### 1.11 Other special features

Basically nearly any conceivable feature can be implemented on request.  
Examples:

#### 1.11.1 Login verification

You can verify upon login if the user is still the same who logged in to your protected area earlier.

This is useful if, e.g., an online store needs to verify upon checkout if the current user is still the same or if someone else is in front of the PC since logging in.

You will need two DocCheck logins. The first must have the “unique key” feature activated. You will then get the unique key passed as parameter “uniquekey=...”. For the second login form, you pass this ID as parameter „dc\_user\_id\_validate\_external“. If the unique key of the user from the second login does not match the passed key, the user is not allowed to continue.

#### 1.11.2 Bypass error handling

By default, DocCheck provides the error pages for all possible reasons why a user is denied access. On request, we can redirect the user to your server even if his login fails (as long as it does not fail because the password was incorrect).

The DocCheck error code is passed back as parameter “dc\_error”. In that case your site must check for the presence of this parameter and react accordingly.



### 2 DocCheck<sup>®</sup> Routing

Many companies wish to offer individualised services on their website, e.g. for different professional groups, different specialties (physicians) or countries. With DocCheck Routing we can help you to send each user to the website for his group. Mechanistically, DocCheck sends the profession, the speciality (for physicians), the country or the language of a user to your server. Please note: personal data of the user is *not* transferred. But it is possible to define a distinct value (unique key) for every single user. By means of the unique key you can re-identify the user at a repeated login. This allows you to offer individualised services to the user.

DocCheck Routing should be implemented if

- you want to offer personalised services, e.g. shops etc.
- you offer specialised contents for certain physicians.
- your website has diverse areas for physicians and pharmacists.
- you offer different language versions of a product site.
- you offer diverse contents for different countries on a website.

#### 2.1 Routing of Professional Groups

Routing of professional groups sends the user to different areas of your website depending on his/her profession (e.g. physician's area or pharmacist's area).

In this case you as the operator of the website provide us with a URL or a URL parameter for each professional group you want to give access to the closed area:

Example URLs:

- Physicians: [http:// www.cyberpharm-shop.com/physician/...](http://www.cyberpharm-shop.com/physician/...)
- Pharmacists: [http:// www. cyberpharm-shop.com/pharmacist/...](http://www.cyberpharm-shop.com/pharmacist/...)

Example URL parameters:

- Physicians: [http://www. cyberpharm-shop.com/secure/script?w=phys](http://www.cyberpharm-shop.com/secure/script?w=phys)
- Pharmacists: [http://www. cyberpharm-shop.com/secure/script?w=pharm](http://www.cyberpharm-shop.com/secure/script?w=pharm)

If you want to do the routing via divers URL parameters, the target URL must be a dynamic website (script).

Do not hesitate to contact us for an individual offer.



## Medical Services

### 2.2 Country or Language Routing

In analogy to routing of professional groups, DocCheck also provides routing based on the user's country or language. In this case the user's country or language is checked in the DocCheck database upon his/her login on your website. DocCheck sends the user to different target URLs depending on his/her statements upon the registration with DocCheck.

Do not hesitate to contact us for an individual offer.

### 2.3 Routing of Specialities

In case you want to offer diverse content for physicians with certain specialties on your website, we also offer a routing according to the physicians' specialty.

Do not hesitate to contact us for an individual offer.

### 2.4 Transfer of an Anonymous ID (Unique Key) for Each User

If you wish to offer individual personalised services on your website and therefore re-identification of a DocCheck user is required after each login, DocCheck can pass a unique but anonymous alphanumeric string (up to 50 characters) for each user to your website.

At each following login of the user the same string, e.g. a1b2c3d4 (as Get-parameter), is transferred to your website. At the login a URL like e.g. <http://www.yourserver.com/secure/script?uniquekey=a1b2c3d4> is accessed.

You can use the unique key to store the user's data with this ID or to offer the user personalised information. Please note that personal data of users are not transferred. If you are interested in personal user data, we can activate DocCheck Personal for your website. Please find out more about DocCheck Personal in section 3.

Do not hesitate to contact us for an individual offer.



## Medical Services

### 3 DocCheck® Personal

If you would like to know more about the visitors on your website, we can activate DocCheck Personal for you. With the user's agreement, DocCheck Personal enables you to collect personal data of the visitors to your website. You can integrate this data for example in your customer relationship management (CRM) system.

After his/her login the user is presented with an information page containing a short introduction explaining the necessity of the data migration. This page also contains a form with the personal data to be transferred (surname, first name, address, e-mail address, profession, specialities of physicians). The user is asked to agree with the data migration to your website.

Cyberpharm provides you with special individualised services on this website. If you would like to use these services Cyberpharm needs your personal details as shown below.

**You enter this website as ...**

Mr / Mrs:	Mlster
Title:	Dr.
First name:	George
Last name:	Test
Street:	11 Test Street
Post code:	N1 4HN
City:	Nowhere
Country:	United Kingdom
e-mail:	info@doccheck.com
Profession:	physician
Specialty:	general practitioner

Yes, I agree with the transmission of these data to Cyberpharm.  
 No, I prefer to enter this website anonymous.

**SUBMIT**

You may test the DocCheck Personal login on the following website:  
[http://www2.doccheck.com/com/login/dc\\_personal/Personal\\_Start.php](http://www2.doccheck.com/com/login/dc_personal/Personal_Start.php)



## Medical Services

The data shown in the form are appended as GET parameters to a script on your server, e.g.:

[http://www.xyz.com/script?dc\\_name=Miller&dc\\_vorname=Tom&dc\\_strasse=...](http://www.xyz.com/script?dc_name=Miller&dc_vorname=Tom&dc_strasse=...)  
Additionally, the user's anonymous ID (unique key) is transferred as a parameter.

For the sake of user-friendliness we suggest to offer the possibility to use your website anonymously, too. Alternatively, an error message could be implemented on your page.

### 3.1 DocCheck® Personal standard

Usually the above procedure is done only once. If the user logs on to your website a second time, only the anonymous ID (unique key) will be transferred allowing the re-identification of the user. If you want to keep your user data up to date, we suggest to use the advanced function Personal "fresh".

Do not hesitate to contact us for an individual offer.

### 3.2 DocCheck® Personal "fresh"

Our service DocCheck Personal "fresh" provides you with the opportunity to keep the data given to you by the user on his first login always up to date. Users tend to move or take new e-mail addresses without letting you know. To address this problem we check - after activation of Personal "fresh" for your website - upon each login of a user on your website whether his data was changed in our database since he last logged on to your website. In this case, the user is asked again to agree to the data migration of his current data to your website.

Do not hesitate to contact us for an individual offer.

### 3.3. DocCheck Personal "Pool"

Don't have a database but still want to store your users' personal data? With the Personal Pool option that is easy. The user's data will not be passed on to your website but are instead accessible to you in your DocCheck CReAM (cf. 7). Personal Pool can be combined with other Personal variants such as Personal „fresh“.



## Medical Services

### **3.4 DocCheck Personal with company and test passwords**

Company passwords (cf. 1.8) are always routed directly to the protected area. They will never see the Personal form.

For test passwords (cf. 1.9), the Personal form is pre-filled with standard data. This will enable you to easily test the encoding of special characters etc. Note that changes to the data in the Personal form are not taken into account for test passwords.

### **3.5 Special features for Personal**

#### **3.5.1 Extended scope of agreement**

It is possible to have a user's agreement to data transfer extend to several logins or your entire company at once. In that case the user would, e.g., only be asked for his permission one for all websites of your company instead of individually for every website.

#### **3.5.2 Limited agreement storage**

With this special feature, the user's disagreement to data transfer will not be stored. Thus he will be asked for his permission again upon the next login to your site.

On request, this can be extended to asking the user every time, even if he agreed.

#### **3.5.3 Pool with data transfer**

By default, Personal Pool does not transfer the data (as plain Personal does), but stores them in your DocCheck CReaM. With this special feature, the data will also be transferred if Pool is activated.

#### **3.5.4 Passing of non-personal demographic data**

If the user does not agree to transferring his personal data to your site, you can still get information on non-personal demographic data such as profession, discipline, activity, country or language.



## Medical Services

### 3.5.5 Encryption

All Personal parameters can also be encrypted or checksummed, cf. 1.4.3.

### 3.5.6 Passing the agreement status

The agreement status (agreed to transfer = 1, disagreed = 0) can be passed back on every login as parameter “dc\_agreement\_status”.

### 3.5.7 Additional checkbox

An additional checkbox can be implemented on the Personal form. It can be used to request additional agreements (e.g. to subscribing to your newsletter). If checked, the status is passed back as “dc\_company\_info\_1=1”.

### 3.5.8 „Yes“ checked by default

By default, the yes/no choice for agreement to data transfer is not pre-checked. It is possible to have “yes” preselected.

### 3.5.9 Passing of personal data upon every login (only with Personal “fresh“)

It is possible to send the user’s personal data upon every login if he has agreed to the data transfer via Personal and has not revoked his consent since. In those cases where the user does not enter via the Personal form, all data are encrypted into one string, passed as parameter „udata\_enc“. Encryption algorithm is always AES 256 bit, followed by hex encoding.

This special feature can only be used in conjunction with Personal “fresh” since the user must agree again if his data have changed.



## Medical Services

### 4 DocCheck® Alias

Your website has different addresses (domains), but the URL visible to the user should stay the same before and after login? DocCheck Alias makes it possible.

Example: Your website can be reached via the following URLs:

- [www.indication24.com](http://www.indication24.com)
- [www.product-for-indication.com](http://www.product-for-indication.com)
- [www.indication-for-you.com](http://www.indication-for-you.com)
- [www.indication-online.com](http://www.indication-online.com)
- [www.indication.com](http://www.indication.com)

No matter which URL the user accesses, he/she is usually directed to the same target URL after the login (e.g. [www.indication.com/physician](http://www.indication.com/physician)). Once DocCheck Alias is installed, the user is always directed to the respective target URL corresponding to the domain he originally accessed, e.g. [www.product-for-indication.com/physician](http://www.product-for-indication.com/physician) or [www.indication-online.com/physician](http://www.indication-online.com/physician).

Do not hesitate to contact us for an individual offer.



**DocCheck®**

## Medical Services

### **5 DocCheck® Groups**

With DocCheck Groups it is possible to give access to your website's protected area to particular persons: you can now admit a closed group of individual users to your website – e.g. for a special premium area, a discussion forum for opinion leaders or the website of a physicians' union.

To enable an individual activation of users, a special DocCheck login is integrated into your website. You can of course provide us with a list of users to enable their direct login to your website from the outset. The selection of users is principally independent of their respective professional group. On the other hand, it is also possible to give general access to one professional group (e.g. physicians) and activate members of another group (e.g. pharmacists) individually.

In case a new user (not pre-activated by the operator of the website) logs on to your website, he/she is presented with an information page. On this page the user is asked to pass his/her personal details (name, address, country, e-mail address, profession) to the owner of the website. The transferred information enables you to decide about the admission of the user to the protected area.



## Medical Services

You receive the given data immediately via e-mail. By clicking on an integrated link you can grant access and at the same time send an e-mail to inform the user about his/her activation. Alternatively, by choosing a second link, access is denied for this user and a respective e-mail is sent.

As the owner of the website you can always administer the currently admitted users in your company's DocCheck CReaM. You can also withdraw the access right for a user at any time.

**Note:** To keep your website user-friendly, you should reassure that the processing of e-mails and the activation/decline of users occur promptly after their application.

Do not hesitate to contact us for an individual offer.



## Medical Services

### 6 DocCheck<sup>®</sup> CReaM (formerly known as Webmaster Lounge)

In the DocCheck CReaM you can quickly and easily administer your websites completely online. In addition you can learn interesting details about the user profile of your website in the areas Statistic and Benchmarking. Here you see who the visitors of your website are and how your website performs when compared to the websites of your competitors. Check out the DocCheck CReaM at <http://www2.doccheck.com/com/lounge> and find out more about its many functions with our virtual company Cyberpharm.

#### 6.1 Administration

After your application for DocCheck Password Protection, you will receive the HTML code for the login and a personal access to the DocCheck CReaM. Once you are logged in, you can edit the different settings for your websites in the administration area. For example you can

- add new websites.
- edit the URLs of your websites.
- define the access rights for professional groups.
- create or edit company passwords for your employees.

The use of the administration area in the DocCheck CReaM is free of charge.

#### 6.2 Statistics

In the Statistics area of the DocCheck CReaM you can learn more about the users of your website. You can directly see which professional groups or specialists visit your website most frequently. A specification according to age, gender or country is also possible. You can always retrieve a general overview of all users or define individual profiles – e.g. to get only data for general practitioners from the UK. With the help of this statistic evaluation you can find out which of your target user groups are reached by your website and you can therefore optimise contents accordingly.

Do not hesitate to contact us for an individual offer.

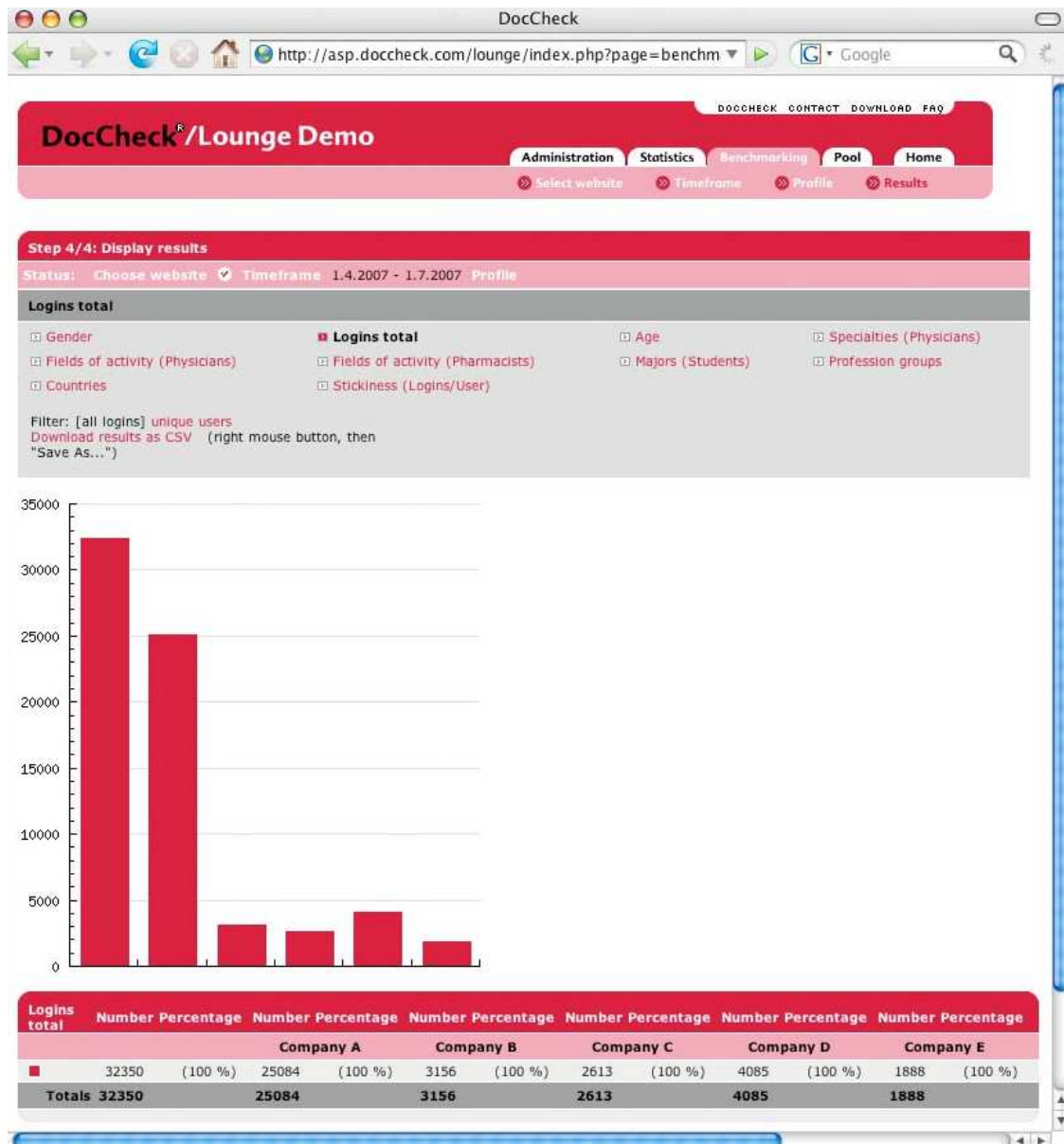


## Medical Services

### 6.3 Benchmarking

How does your website perform in comparison to other, related websites? We offer an anonymous benchmark of your website in comparison with five competitors of your choice. The statistical data of your website is directly compared to the data of these five companies (depicted as company A - E).

Thereby you get an idea how your website performs and at which point optimization may be needed.



Do not hesitate to contact us for an individual offer.

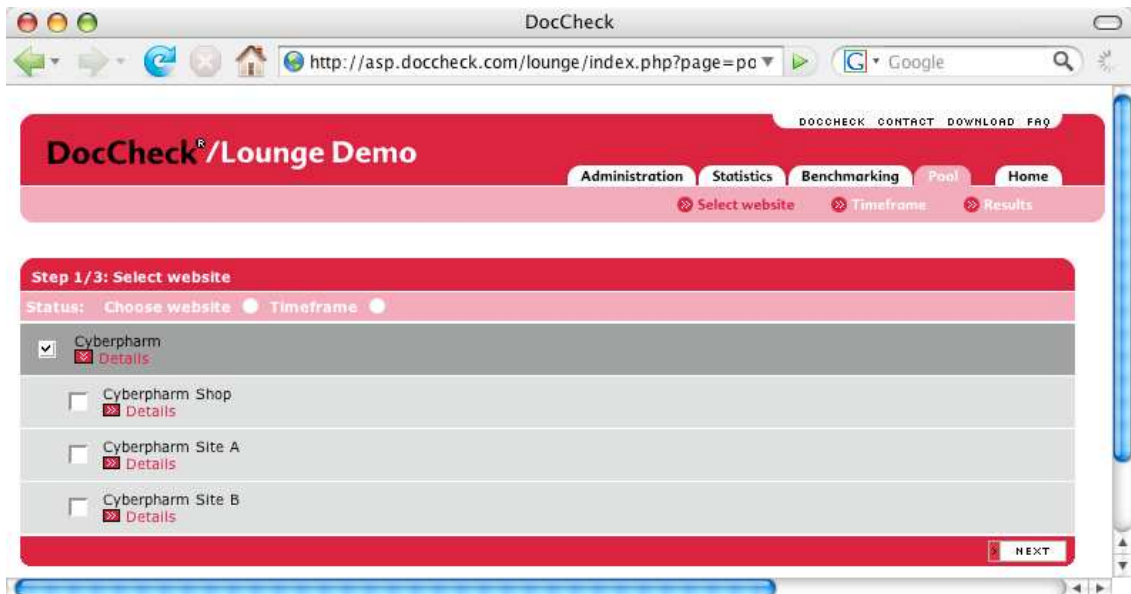


## Medical Services

### 7 DocCheck® Pool

Upon activation of DocCheck Pool we save your users' data collected via Personal in a separate database (see chapter 3 for DocCheck Personal). You can retrieve the acquired data (name, address, e-mail address, profession, specialities of physicians) online in the DocCheck CRM anytime.

After entering the DocCheck CReAM with your personal username/password combination, you have access to your users' data with three simple steps: at first you choose a website of interest or select the whole company for a complete database of all visitors to your websites.





## Medical Services

The second step is the selection of the desired timeframe. Thereafter you only need to decide the kind of file you prefer to download.

**Step 2/3: Select timeframe**

Status: Choose website  Timeframe

Quick and simple:

all records  new records since last download (06.09.07)

Or choose a timeframe:

from: [dropdown] [dropdown] [dropdown] [dropdown] [dropdown] [dropdown]

to: [dropdown] [dropdown] [dropdown] [dropdown] [dropdown] [dropdown]

Years	Quarters	Months
2003	Q1/2006	9/2006
2004	Q2/2006	10/2006
2005	Q3/2006	11/2006
2006	Q4/2006	12/2006
2007	Q1/2007	1/2007
	Q2/2007	2/2007
	Q3/2007	3/2007
	Q4/2007	4/2007
		5/2007
		6/2007
		7/2007
		8/2007

Art des Downloads:

Pool-Daten

Alle Folge- und anonymen Logins anzeigen

**NEXT**

With just a few clicks in the DocCheck CReAM you get a chart of all visitors to your website(s) within a selected timeframe. You do not have to take the detour to your technical department and the elaborate maintenance of databases is not necessary anymore. In combination with DocCheck Personal fresh you get always up-to-date data if you push a button. If e.g. the address of a user changes, his new data is added automatically to your database (see also 3.2).

	A	B	C	D	E	F	G	H	I	J	K	L	M	N
	login_id	dc_date	uniquekey	dc_gender	dc_titel	dc_firstname	dc_name	dc_street	dc_zip	dc_city	dc_country	dc_profession	dc_specialty	dc_email
1	3658	3.11.2004	48c2c8125c3	Herr	Dr.	Test	Personal	Vogelsanger Str. 66	50823	Köln	DE	1	1	info@doccheck.com
3	1223045680	3.11.2004	48c2c8125c3	Herr	Dr.	Test	Personal	Vogelsanger Str. 66	50823	Köln	DE	1	1	info@doccheck.com
4	3658	3.11.2004	af01b4c34173	Herr		Hans	Beispiel	Hinterm Wald 1	9090	Waldhausen	DE	1	16	keine@doccheck.de
5	3658	3.11.2004	00c456e955a	Frau		Frieda	Test	Garnichtweg 11	83768	Nichtdorf	DE	2	1	keine@doccheck.com
6	3658	3.11.2004	1dd3c5ce4ee	Frau		Anneliese	Schmidt	Im Weg 24	49668	Groß Chaos	DE	5		keine@doccheck.com
7	1223045680	3.11.2004	1dd3c5ce4ee	Frau		Anneliese	Schmidt	Im Weg 24	49668	Groß Chaos	DE	5		keine@doccheck.com
8	1223045680	3.11.2004	af01b4c34173	Herr	Dr.	Hans	Beispiel	Vor dem Wald 87	9090	Waldhausen	DE	1	16	keine@doccheck.de
9	3658	3.11.2004	5b034bf0e0a	Monsieur	Dr.	Stéphane	Exemple	99 rue de la Galeté	75000	Paris	FR	1	1	
10	3658	3.11.2004	af01b4c34173	Herr	Dr.	Hans	Beispiel	Vor dem Wald 87	9090	Waldhausen	DE	1	16	keine@doccheck.de



**DocCheck<sup>®</sup>**

### **Medical Services**

Of course you may also use DocCheck Pool as a backup system to your own database.

To test the function DocCheck Pool, please enter the website <http://www2.doccheck.com/com/lounge> with guest / guest. In the area “Pool” you see an analysis of the users’ data belonging to our virtual company Cyberpharm.

Do not hesitate to contact us for an individual offer.



## Medical Services

### 8. Contact

For non-commercial facilities, e.g. physicians' networks, universities and so on a reduced pricing (50%) is possible.

We are pleased to make you a non-binding offer tailor-made to your demands!

Your contact persons:

Marie Sipos  
DocCheck Medical Services GmbH  
Vogelsanger Str. 66  
50823 Cologne  
Germany

Telephone: +49- (0) 221 9 20 53-513  
Telefax: +49- (0) 221 9 20 53-557  
eMail: [marie.sipos@doccheck.com](mailto:marie.sipos@doccheck.com)  
<http://www.doccheck.com>

Dennis Bohlsen  
DocCheck Medical Services GmbH  
Vogelsanger Str. 66  
50823 Cologne  
Germany

Telephone: +49- (0) 221 9 20 53-329  
Telefax: +49- (0) 221 9 20 53-557  
eMail: [dennis.bohlsen@doccheck.com](mailto:dennis.bohlsen@doccheck.com)  
<http://www.doccheck.com>

DocCheck is a registered trademark of DocCheck Medical Services GmbH, Cologne  
© 1998 - 2009 DocCheck Medical Services GmbH